

STANDARD DEPARTURE CHART - INSTRUMENT

VAR 6° W

D-ATIS(English) 128.65
D-ATIS(Chinese) 127.6

ZBAA BEIJING/Capital
RNAV RWY 36R/01(IDKEX)

TL 3600
TA 3000
3300(QNH ≥ 1031hPa)
2700(QNH ≤ 979hPa)

APP01 126.1(125.05)	APP11 119.7(127.75)	TWR01 124.3(118.3)	18R/36L
APP02 119.0(125.05)	APP12 119.85(119.425)	TWR02 118.5(118.05)	18L/36R
APP03 120.2(125.05)	APP15 125.8(119.425)	TWR03 118.6(118.3)	01/19
APP09 121.1(127.75)	APP16 124.4(127.75)		
APP10 129.0(127.75)	APP17 120.6(127.75)		
	APP18 125.5(119.425)		

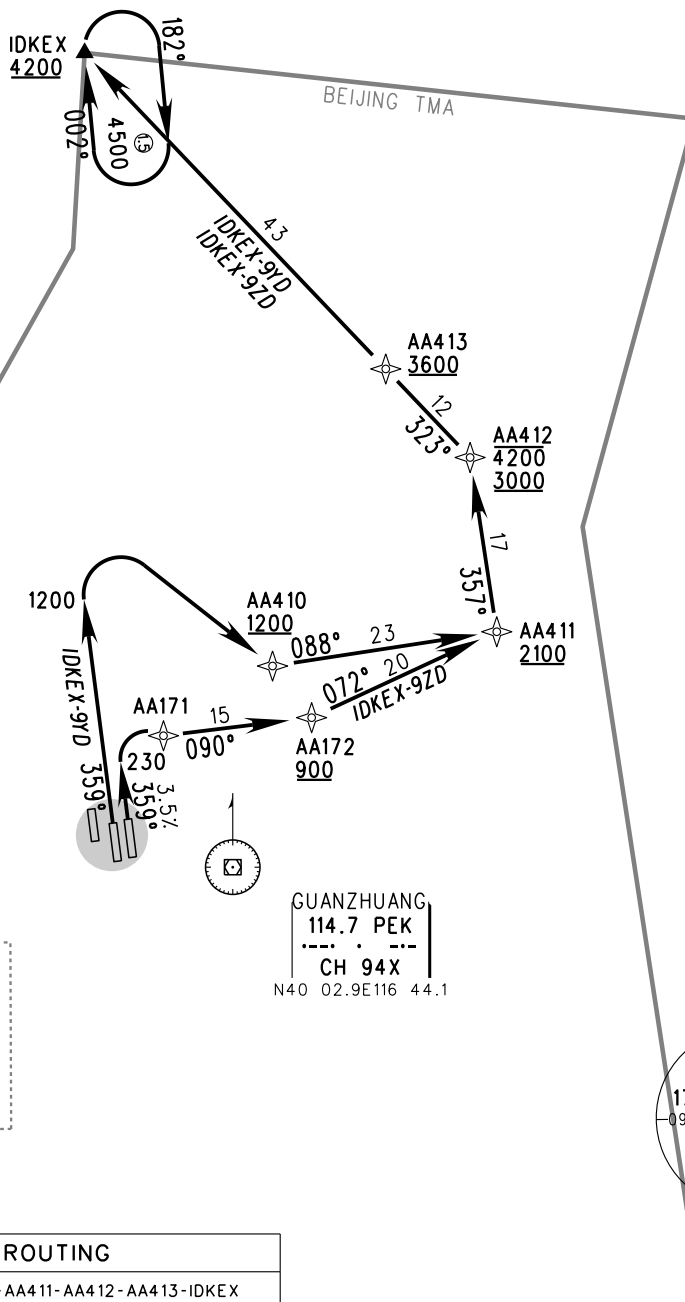
BEARINGS ARE MAGNETIC.
ALTITUDES, ELEVATIONS
AND HEIGHTS IN METERS.
DME DISTANCES IN
NAUTICAL MILES.
DISTANCES IN KM.



RNAV1
GNSS, RADAR REQUIRED

Notes:

1. No aircraft is permitted to maneuver or circumnavigate CB in Prohibited Fly Over Area.
2. Departure turn before DER is prohibited.



RWY	SID	ROUTING
01	IDKEX-9ZD	230-AA171-AA172-AA411-AA412-AA413-IDKEX
36R	IDKEX-9YD	1200-AA410-AA411-AA412-AA413-IDKEX

Changes: D-ATIS.