

STANDARD DEPARTURE CHART-INSTRUMENT

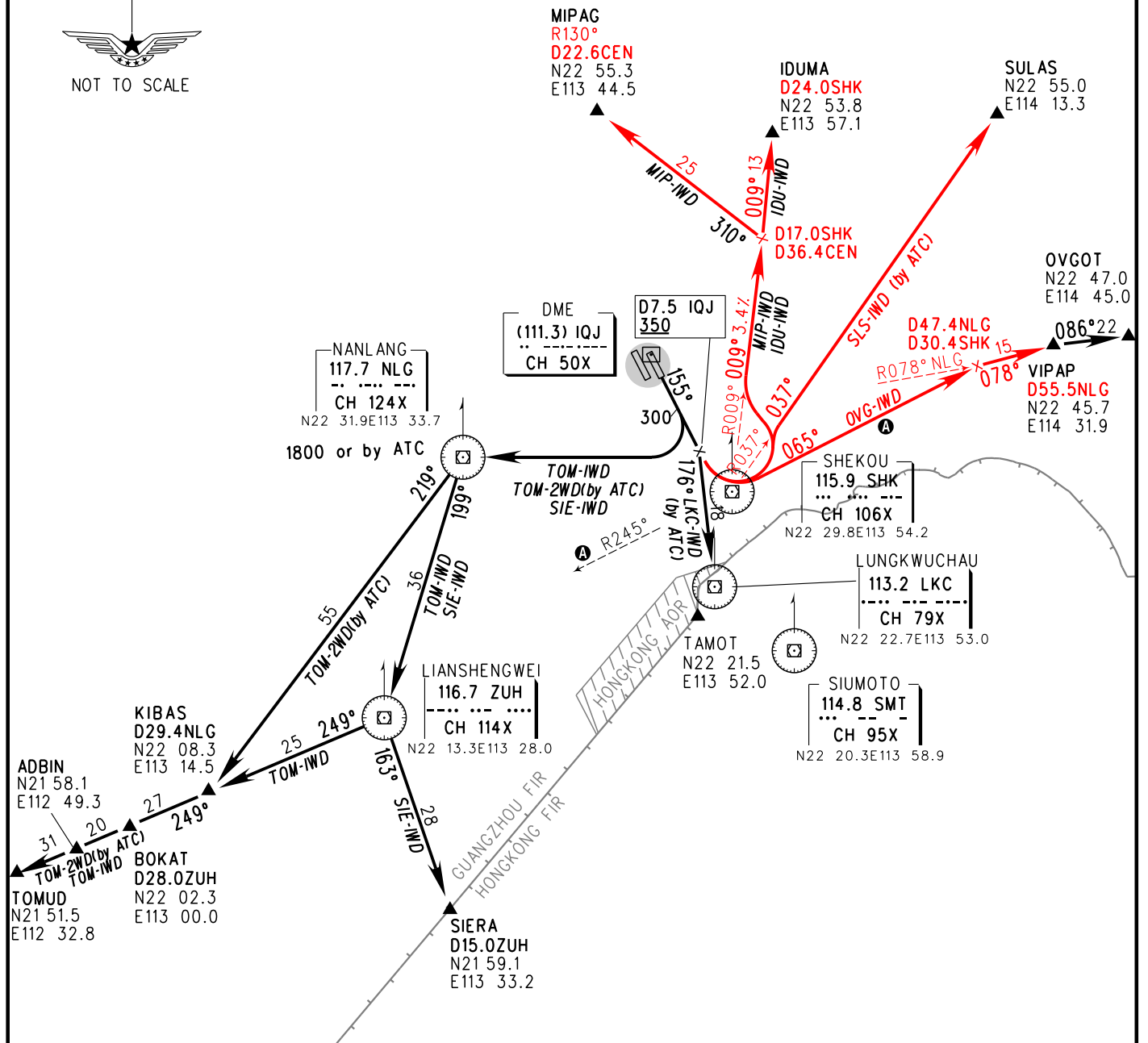
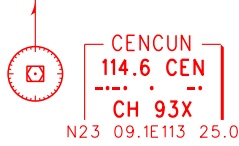
D-ATIS 127.45(DEP)
TWR 130.35(118.05)(E)
VAR2°W 118.45(130.35)(W)

ZGSZ SHENZHEN/Boon
RWY15

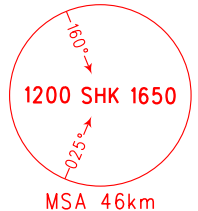
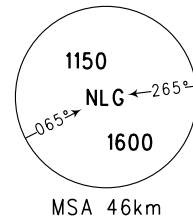
BEARINGS ARE MAGNETIC.
ALTITUDES, ELEVATIONS
AND HEIGHTS IN METERS.
DME DISTANCES IN
NAUTICAL MILES.
DISTANCES IN KM.

Zhuhai APP01 120.35(125.525)
APP02 119.55(119.775)
APP03 123.85(119.775)
APP04 119.025(125.525)
APP05 127.95(119.775)

TL 3600(QNH <980hPa)
3300(QNH ≥980hPa)
TA 2700



- Note:**
- Deviation to south of R065° SHK is forbidden for OVG-IWD, IDU-IWD, SLS-IWD, MIP-IWD. Deviation to south of R245° SHK is forbidden for TOM-IWD/2WD, SIE-IWD.
 - Departure turn MAX IAS425km/h.
 - When two RWYs used for independent departure, TOM-IWD/2WD, SIE-IWD need ATC clearance.
 - Ⓐ Deviation to south is forbidden.



Changes: Procedure, MSA. delete 'GLN' 'SHL'