

# STANDARD ARRIVAL CHART - INSTRUMENT

D-ATIS(English) 127.075 TWR01 118.8 (118.15)  
 D-ATIS(Chinese) 126.8 TWR02 130.5 (118.15)  
 VAR2.3° W TWR03 124.375 (118.15)

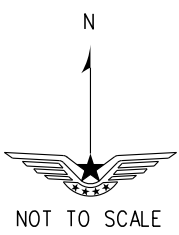
ZUTF CHENGDU/Tianfu  
 RNAV RWY01/02 (MEXAD/BUPMI)

TL 3600  
 TA 3000  
 3300 (QNH ≥ 1031hPa)  
 2700 (QNH ≤ 979hPa)

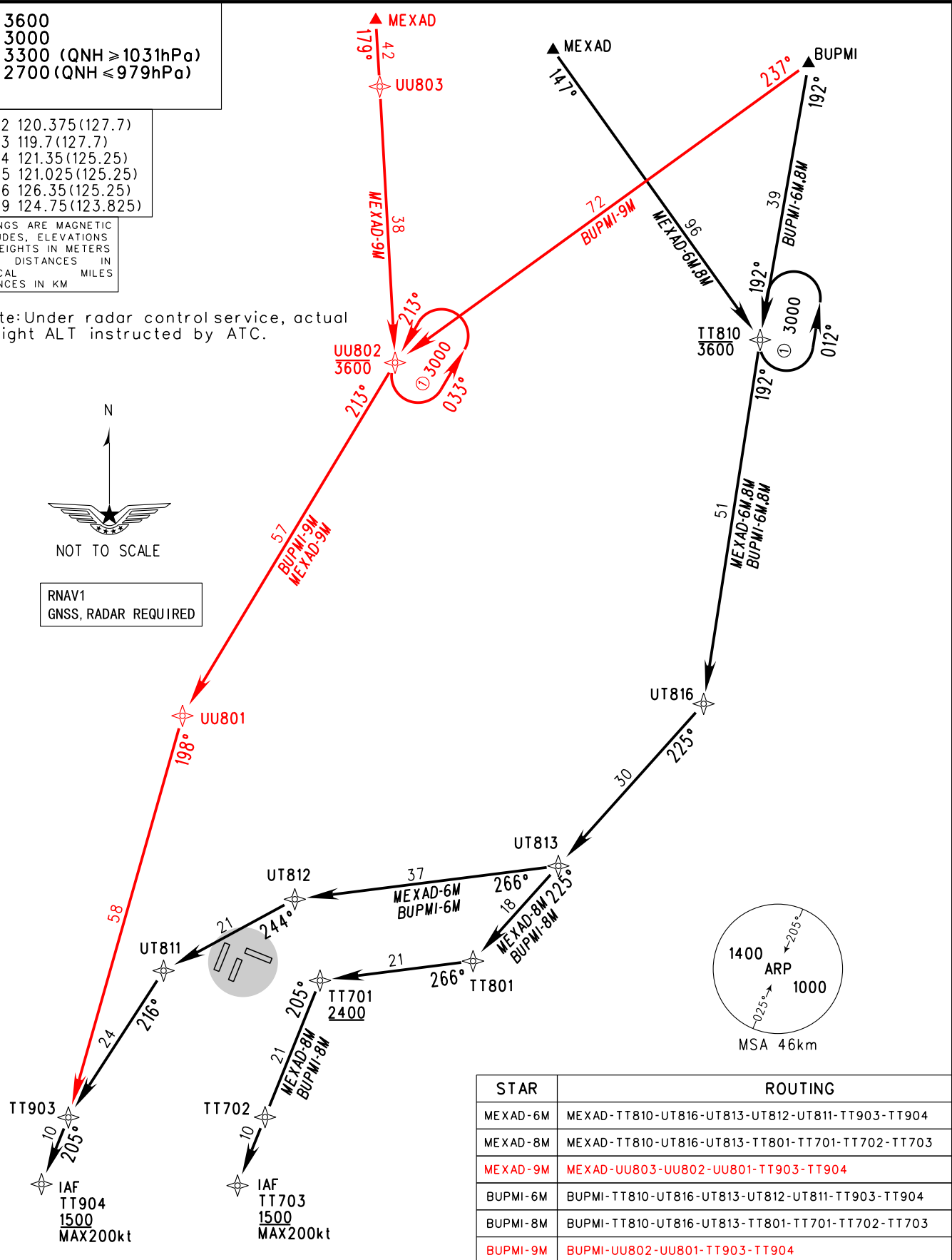
APP02 120.375 (127.7)  
 APP03 119.7 (127.7)  
 APP04 121.35 (125.25)  
 APP05 121.025 (125.25)  
 APP06 126.35 (125.25)  
 APP09 124.75 (123.825)

BEARINGS ARE MAGNETIC  
 ALTITUDES, ELEVATIONS  
 AND HEIGHTS IN METERS  
 DME DISTANCES IN  
 NAUTICAL MILES  
 DISTANCES IN KM

Note: Under radar control service, actual flight ALT instructed by ATC.



RNAV1  
 GNSS, RADAR REQUIRED



STAR	ROUTING
MEXAD-6M	MEXAD-TT810-UT816-UT813-UT812-UT811-TT903-TT904
MEXAD-8M	MEXAD-TT810-UT816-UT813-TT801-TT701-TT702-TT703
<b>MEXAD-9M</b>	<b>MEXAD-UU803-UU802-UU801-TT903-TT904</b>
BUPMI-6M	BUPMI-TT810-UT816-UT813-UT812-UT811-TT903-TT904
BUPMI-8M	BUPMI-TT810-UT816-UT813-TT801-TT701-TT702-TT703
<b>BUPMI-9M</b>	<b>BUPMI-UU802-UU801-TT903-TT904</b>

Changes: MEXAD-9M, BUPMI-9M.