

STANDARD DEPARTURE CHART-INSTRUMENT

D-ATIS(English) 127.075
 D-ATIS(Chinese) 126.8
 VAR 2.3° W

ZUTF CHENGDU/Tianfu
 RNAV RWY19

TWR01 118.8(118.15)
 TWR02 130.5(118.15)
 TWR03 124.375(118.15)

BEARINGS ARE MAGNETIC.
 ALTITUDES, ELEVATIONS
 AND HEIGHTS IN METERS.
 DME DISTANCES IN
 NAUTICAL MILES.
 DISTANCES IN KM.

TL 3600
 TA 3000
 3300 (QNH ≥ 1031hPa)
 2700 (QNH ≤ 979hPa)

APP02 120.375(127.7)
 APP03 119.7(127.7)
 APP04 121.35(125.25)
 APP05 121.025(125.25)
 APP06 126.35(125.25)
 APP09 124.75(123.825)

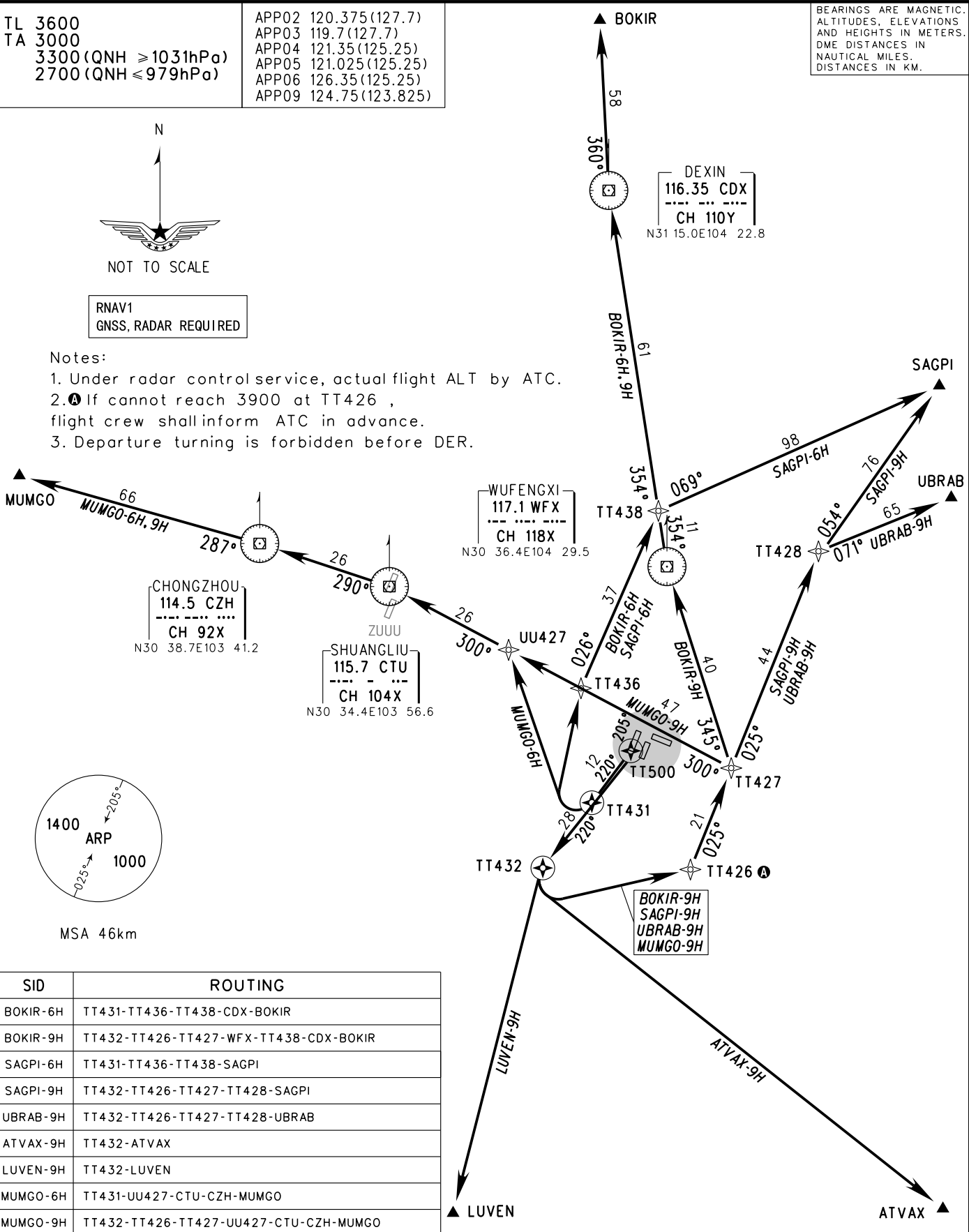


NOT TO SCALE

RNAV1
 GNSS, RADAR REQUIRED

Notes:

- Under radar control service, actual flight ALT by ATC.
- If cannot reach 3900 at TT426, flight crew shall inform ATC in advance.
- Departure turning is forbidden before DER.



| SID | ROUTING |
|-----------|---------------------------------------|
| BOKIR-6H | TT431-TT436-TT438-CDX-BOKIR |
| BOKIR-9H | TT432-TT426-TT427-WFX-TT438-CDX-BOKIR |
| SAGPI-6H | TT431-TT436-TT438-SAGPI |
| SAGPI-9H | TT432-TT426-TT427-TT428-SAGPI |
| UBRAB-9H | TT432-TT426-TT427-TT428-UBRAB |
| ATVAX-9H | TT432-ATVAX |
| LUUVEN-9H | TT432-LUUVEN |
| MUMGO-6H | TT431-UU427-CTU-CZH-MUMGO |
| MUMGO-9H | TT432-TT426-TT427-UU427-CTU-CZH-MUMGO |

Changes: D-ATIS.