

STANDARD DEPARTURE CHART - INSTRUMENT

VAR 5.7° W

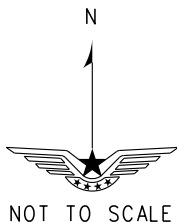
D-ATIS 127.25
TWR(N) 123.65(118.75)
TWR(S) 118.3(118.75)

ZSHC HANGZHOU/Xiaoshan
RNAV RWY06/07

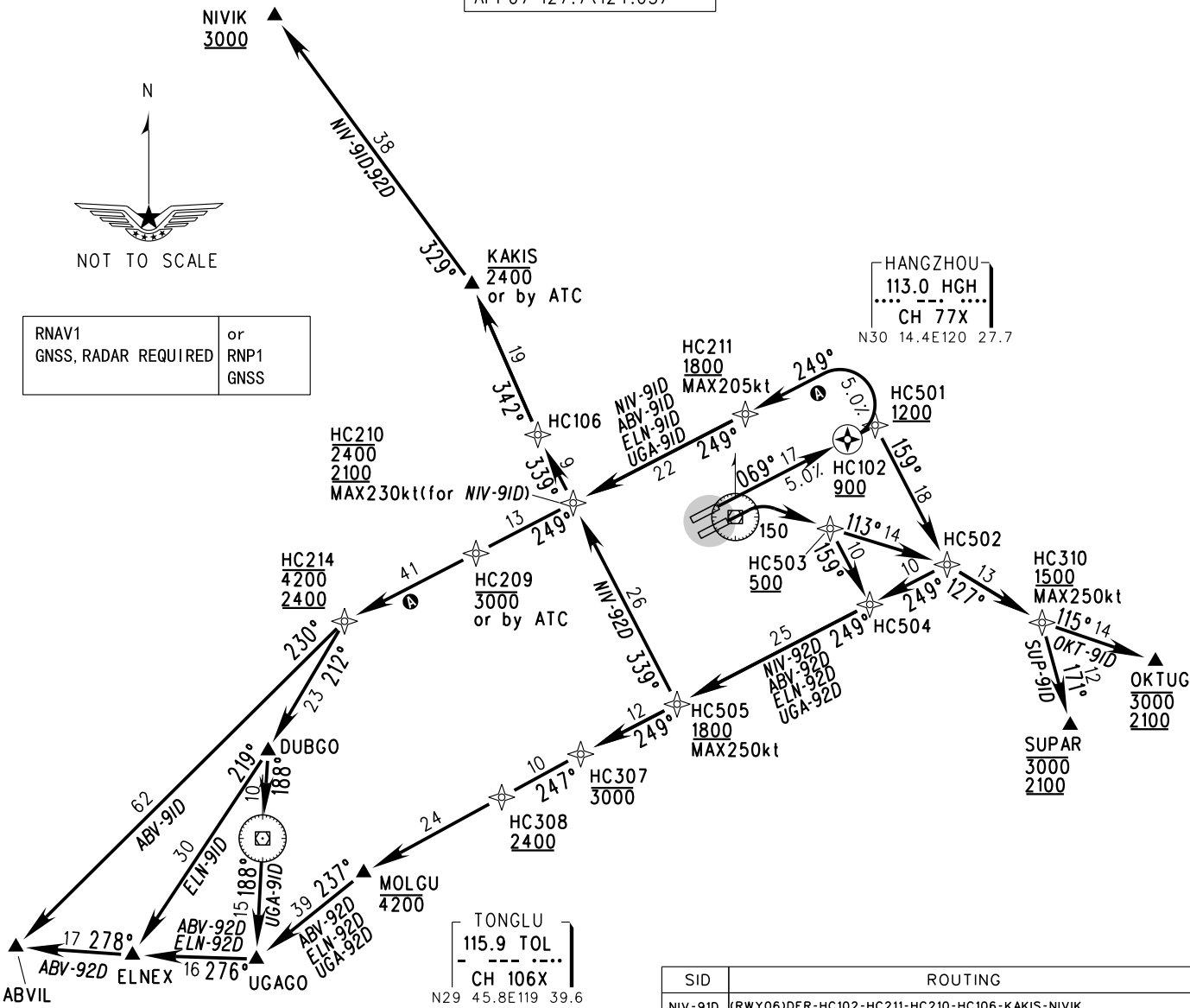
BEARINGS ARE MAGNETIC.
ALTITUDES, ELEVATIONS
AND HEIGHTS IN METERS.
DME DISTANCES IN
NAUTICAL MILES.
DISTANCES IN KM.

APP01 120.05(124.65)
APP02 125.55(119.15)
APP03 126.05(125.275)
APP04 120.4(119.15)
APP05 119.425(125.275)
APP07 127.7(124.65)

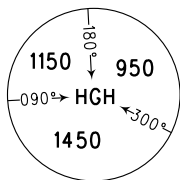
TL 3600
TA 3000
3300(QNH ≥ 1031hPa)
2700(QNH ≤ 979hPa)



RNAV1
GNSS, RADAR REQUIRED or
RNP1
GNSS



- Notes:
- Departure turn before DER is forbidden.
 - UGA-91D, ELN-91D, ABV-91D, NIV-91D: Aircraft with average climb gradient ≥ 5.0%.
 - Pay attention to keeping track, veering northerly is forbidden.



MSA 46km

SID	ROUTING
NIV-91D	(RWY06)DER-HC102-HC211-HC210-HC106-KAKIS-NIVIK
NIV-92D	(RWY06)DER-HC501-HC502
	(RWY07)DER-150-HC503
OKT-91D	(RWY06)DER-HC501
	(RWY07)DER-150-HC503
SUP-91D	(RWY06)DER-HC501
	(RWY07)DER-150-HC503
UGA-91D	(RWY06)DER-HC102-HC211-HC210-HC209-HC214-DUBGO-TOL-UGAGO
UGA-92D	(RWY06)DER-HC501-HC502
	(RWY07)DER-150-HC503
ELN-91D	(RWY06)DER-HC102-HC211-HC210-HC209-HC214-DUBGO-ELNEX
ELN-92D	(RWY06)DER-HC501-HC502
	(RWY07)DER-150-HC503
ABV-91D	(RWY06)DER-HC102-HC211-HC210-HC209-HC214-ABVIL
ABV-92D	(RWY06)DER-HC501-HC502
	(RWY07)DER-150-HC503

Changes: Notes.